

## Metal Additive Manufacturing System

# BLT-S510/S515



ISO9001:2015 / ISO14001:2015 / ISO45001:2018

### Breakthrough Build Limit, Aim for the Highest

Selecting Great Components

Stable Full-substrate Printing

24-hour Unattended Operation

Large-size and High-quality Production

More Valuable after Multiple Tests



**Batch Application Verification**  
Maturity and stability of system operation



**Large Build Dimension**  
Precision forming of parts within 500mm



**Multi-beam Lasers Splicing**  
The building quality of each area is consistent



**Hard Scraper**  
Fixed layer thickness Adhere to the quality



**Permanent Filtration System**  
Automatic blowback cleaning Long filter life



**Self-adapting Powder Spreading Correction**  
Deep learning technology makes printing smarter



**Powder Supply System**  
Automatic powder adding Uninterrupted production

Supporting Materials	Titanium Alloy, Aluminum Alloy, Superalloy, Stainless Steel, High-strength Steel, Tool Steel
Build Dimension <sup>(1)</sup>	500mm×500mm×1000mm (W×D×H) (BLT-S510) 500mm×500mm×1500mm (W×D×H) (BLT-S515)
Laser Power	500W×4; 500W×6
Wave Length	1060nm-1080nm
Layer Thickness	20μm~100μm
Maximum Scanning Speed	7m/s
Building Speed <sup>(2)</sup>	100cm <sup>3</sup> /h; 150cm <sup>3</sup> /h
Preheating Temperature	RT +20°C~100°C
Beam Quality	M <sup>2</sup> <1.1
Optics System	F-theta Lens
Recoating	Single/Double-direction
Minimum Oxygen Content	≤100ppm
Gas Requirement	Ar
Power Requirement	≤12kW; ≤15kW
Supply Voltage	AC380V 3Ph/N/PE
Dimension of the System <sup>(3)</sup>	5540mm×5600mm×3800mm (W×D×H) (BLT-S510) 6240mm×5072mm×4056mm (W×D×H) (BLT-S515) Height of Tri-color Indicator: Approx.410mm
Weight of the System	Approx. 11500kg(BLT-S510)    Approx. 21500kg(BLT-S515)
Software	Magics; BLT-BP; BLT-MCS



Citations: (1)Excluding substrate thickness. (2)Dependent on part geometry, material and parameter set used.  
(3)The dimension does not include the height of tri-color indicator and the height is remarked separately.  
The dimension is only theoretical, the actual data is affected by the configuration, subject to the installation.

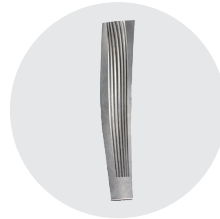
## > BLT-S510/S515 APPLICATIONS



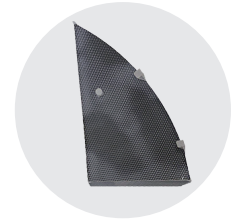
Aero-Engine  
Fan Blades



Fan Blade  
Hemming



Fan Blade



Hydrazine  
Bottle Adapter

## > BLT-S510/S515 INTELLIGENT MODULES

### Standard Functions

Diagnosis Fault-grading/Process Data Traceability/Height Self-checking on Parts/  
Powder Spreading Quality Control/3D Reconstruction

### Optional Functions

BLT-MCS Connect/BLT-MES System

## > BLT-S510/S515 AUTOMATION SOLUTIONS



Powder Sieving Machine  
BLT-SF800



Powder Collection Machine  
BLT-WL400



Powder Adding Machine  
BLT-GF300

## > BLT-S510/S515 CONSUMABLES AND POWDERS

### Consumable

Scraper/Substrate

### Powder

Titanium Alloy/Aluminum Alloy/Superalloy/Stainless Steel/High-strength Steel/Tool Steel